

Town of Fayetteville Zoning Map

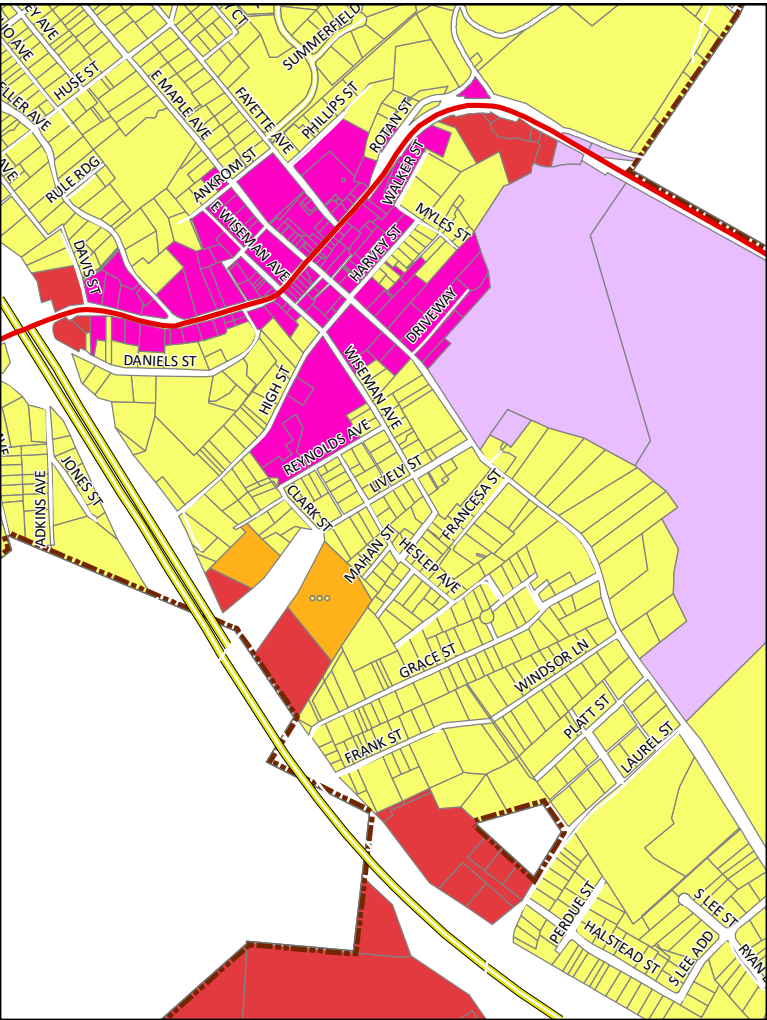
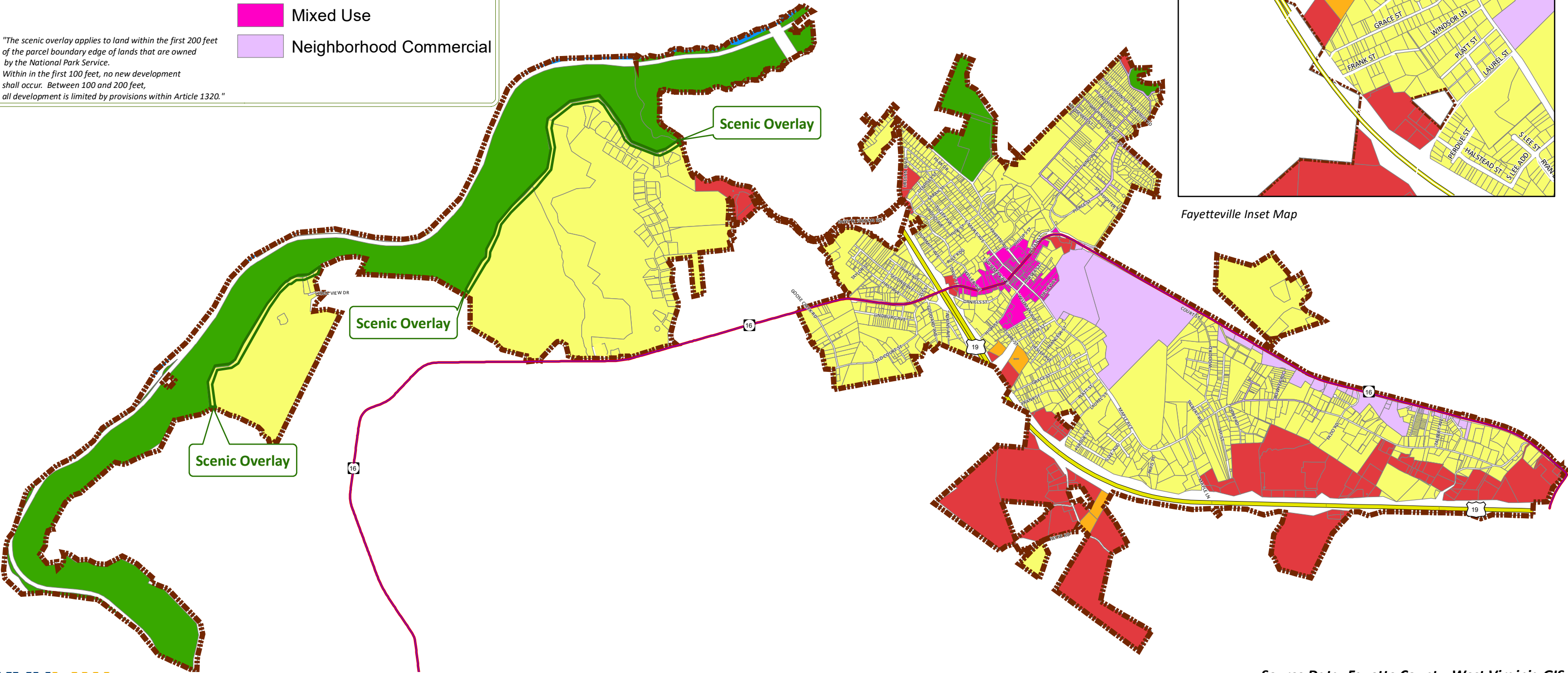
July 7, 2022

Legend

- State Route
- Municipal Boundry
- Water
- US Route 19
- Scenic Overlay

- ### Zoning Districts
- Conservation
 - Single Family Residential
 - Multi-Family Residential
 - General Commercial
 - Mixed Use
 - Neighborhood Commercial

"The scenic overlay applies to land within the first 200 feet of the parcel boundary edge of lands that are owned by the National Park Service.
Within in the first 100 feet, no new development shall occur. Between 100 and 200 feet, all development is limited by provisions within Article 1320."



Fayetteville Inset Map